

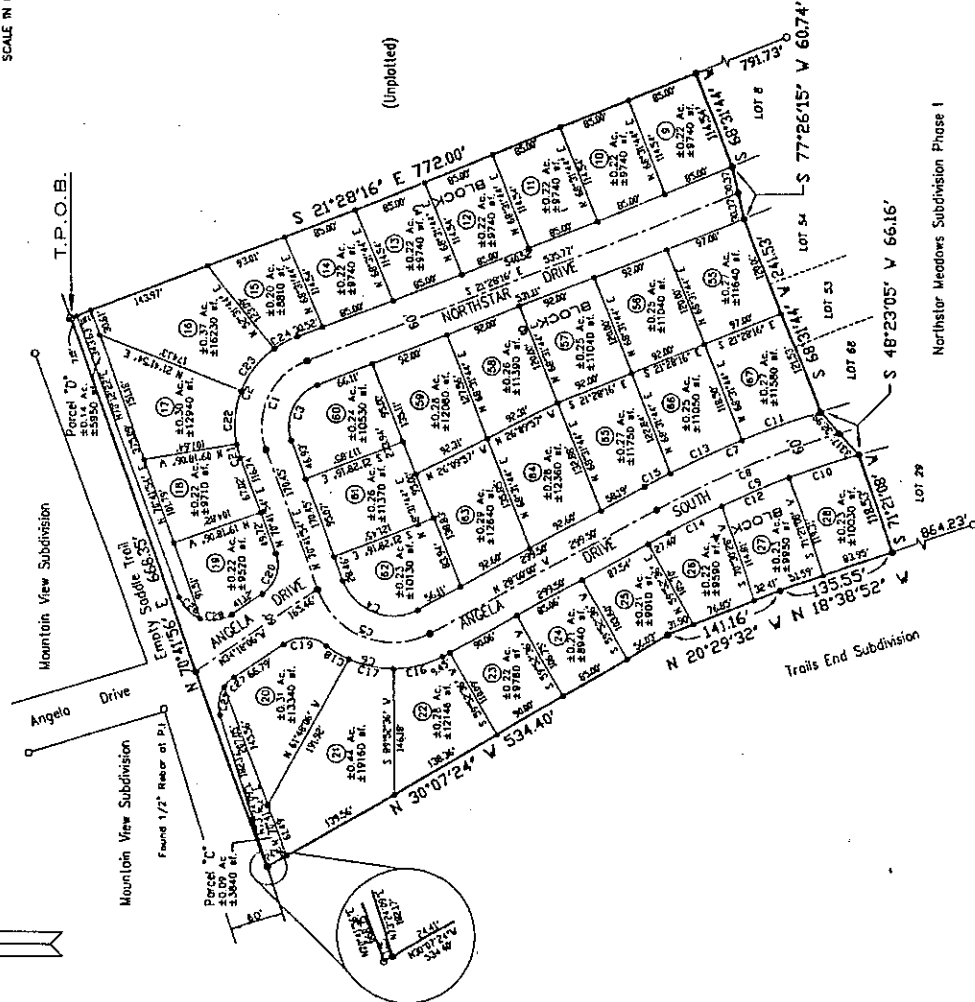
# A PLAT OF NORTHSTAR MEADOWS SUBDIVISION PHASE 2

Located within the NW1/4, Section 9, T2N, R18E, B.M.,  
CITY OF HAILEY, BLAINE COUNTY, IDAHO  
October, 1997

Basis of Bearings is  
Northstar Meadows Subdivision Phase I



- LEGEND**
- FOUND 1/2" REBAR
  - FOUND 5/8" REBAR
  - SET BRASS CAP LS 3621
  - SET 1/2" REBAR LS 3621
  - SET 5/8" REBAR LS 3621
  - Ⓢ LOT NUMBER



- NOTES**
- 1) A TEN (10) FOOT WIDE PUBLIC UTILITIES EASEMENT IS RESERVED ON ALL LOT LINES.
  - 2) ALL UTILITIES SHALL BE UNDERGROUND.
  - 3) ALL LOTS WITHIN THIS SUBDIVISION SHALL BE RESTRICTED TO SINGLE FAMILY HOMES.
  - 4) PORTIONS OF LOTS IN THIS SUBDIVISION ARE WITHIN THE 500 FOOT ZONING DISTRICT DESIGNATED AS R-1.5, AS DEPICTED IN FEMA FIRM PANEL NO. 86022-46640, DATED MARCH 17, 1997. NEITHER THE OWNER, CITY OF HAILEY NOR CALENA ENGINEERING, INC. REPRESENTS, GUARANTEES, WARRANTS OR IMPLIES THAT THE PARCELS IN THIS SUBDIVISION ARE SAFE AND FREE FROM FLOODS OR FLOOD DANGER.
  - 5) A TEN (10) FOOT WIDE PUBLIC UTILITIES EASEMENT AND SNOW STORAGE EASEMENT IS RESERVED ALONG ALL ROAD RIGHT-OF-WAY LINES.
  - 6) PARCELS 'C' & 'D' ARE OPEN SPACE AREAS RESERVED FOR A LANDSCAPE BUFFER.
  - 7) THIS PLAT IS SUBJECT TO DECLARATION OF COVENANTS, CONDITIONS, AND RESTRICTIONS FOR NORTHSTAR MEADOWS RECORDED JANUARY 10, 1995, AS INSTRUMENT NO.374687.

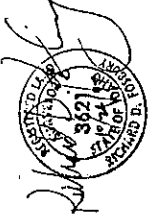
**CURVE TABLE**

NUMBER	DELTA	CHORD BEG	RADIUS	LENGTH	TANGENT	EMB. LENGTH
C1	87°49'30"	N 65°23'11"	80.00'	132.63'	77.83'	110.98'
C2	87°49'30"	N 65°23'11"	116.00'	166.62'	105.91'	152.59'
C3	87°49'30"	N 65°23'11"	50.00'	76.65'	48.34'	61.06'
C4	98°41'34"	S 51°20'57"	90.00'	153.04'	104.82'	136.56'
C5	66°43'33"	S 05°21'46"	120.00'	193.75'	79.01'	131.99'
C6	10°37'47"	N 25°41'06"	1200.00'	203.36'	112.14'	231.16'
C7	11°59'22"	N 25°00'19"	1145.00'	209.59'	120.24'	239.16'
C8	4°35'21"	N 18°06'42"	83.00'	83.98'	42.81'	83.98'
C9	4°35'21"	N 22°31'43"	104.00'	81.08'	42.96'	85.86'
C10	4°26'49"	S 24°10'34"	1203.00'	52.13'	46.88'	82.10'
C11	3°25'23"	N 25°15'18"	1143.00'	59.74'	75.88'	94.36'
C12	28°00'47"	N 13°59'07"	120.00'	50.71'	29.95'	56.11'
C13	24°26'45"	N 31°03'05"	120.00'	51.62'	26.21'	51.22'
C14	14°05'00"	N 30°13'04"	50.00'	50.98'	25.61'	47.66'
C15	73°00'00"	S 71°48'06"	40.00'	32.36'	30.69'	36.11'
C16	82°4'01"	N 74°34'09"	110.00'	16.14'	9.89'	16.11'
C17	32°06'00"	S 59°34'08"	110.00'	61.40'	31.63'	60.80'
C18	15°03'00"	S 28°59'56"	110.00'	28.90'	14.54'	28.88'
C19	49°23'26"	S 81°54'08"	40.00'	34.48'	18.97'	32.55'
C20	22°34'19"	N 45°25'15"	40.00'	13.99'	8.10'	15.88'
C21	53°51'47"	S 07°22'12"	48.00'	37.68'	20.32'	35.23'

THIS MAP IS A MECHANICAL REPRODUCTION OF THAT ON FILE IN THE OFFICE OF THE COUNTY CLERK OF BLAINE COUNTY, IDAHO. IT IS NOT TO BE USED AS A SUBSTITUTE FOR THE ORIGINAL RECORDS ON FILE IN THE OFFICE OF THE COUNTY CLERK OF BLAINE COUNTY, IDAHO.

**HEALTH CERTIFICATE:** Sanitary restrictions as required by Idaho Code Title 50, Ch. 13, have been satisfied. Sanitary restrictions may be reimposed in accordance with Idaho Code Title 50, Ch. 13, Sec. 50-1526, by issuance of a Certificate of disapproval.

Date \_\_\_\_\_ South Central District Health Dept., EMS



RICHARD D. FOSBURY, L.S. 3621

NORTHSTAR MEADOWS  
PHASE 2 ENGINEERS INC.  
301 W. 300 S.  
PO BOX 3018  
PAGE 1 OF 2

PLAT 58500-0318-DWG-CM-STATE-1997-14579

